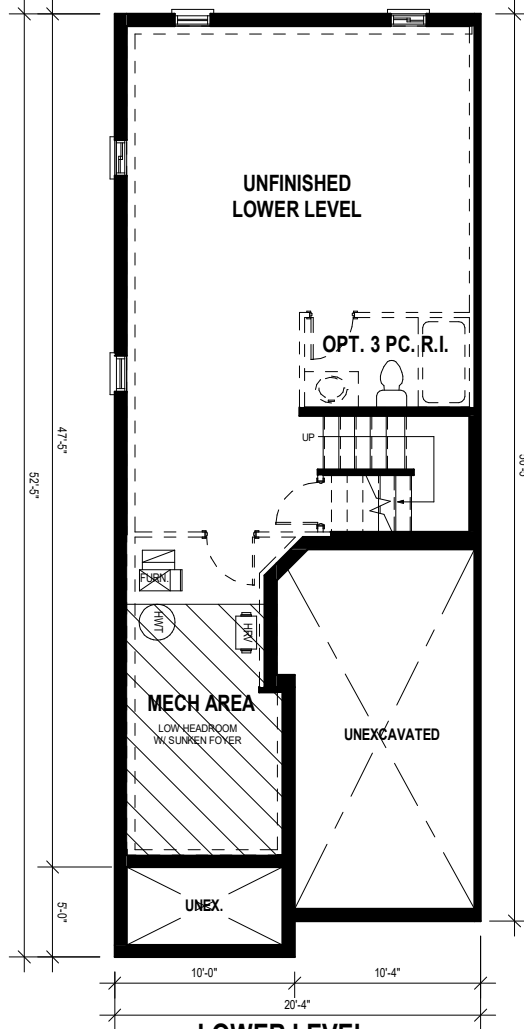


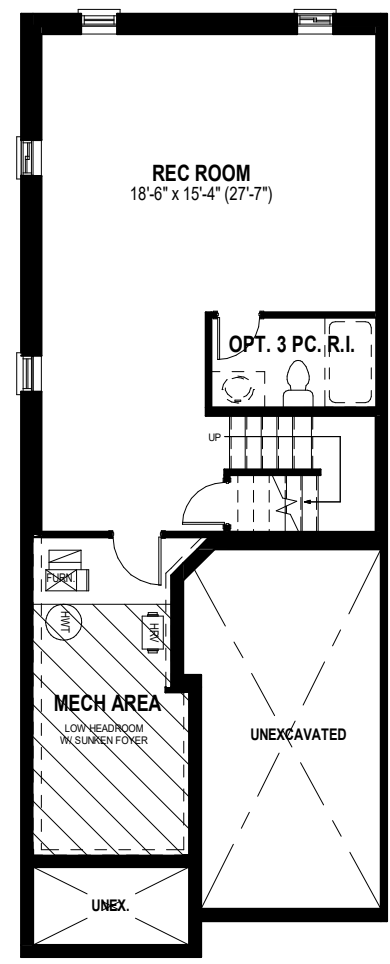
**WALKOUT**



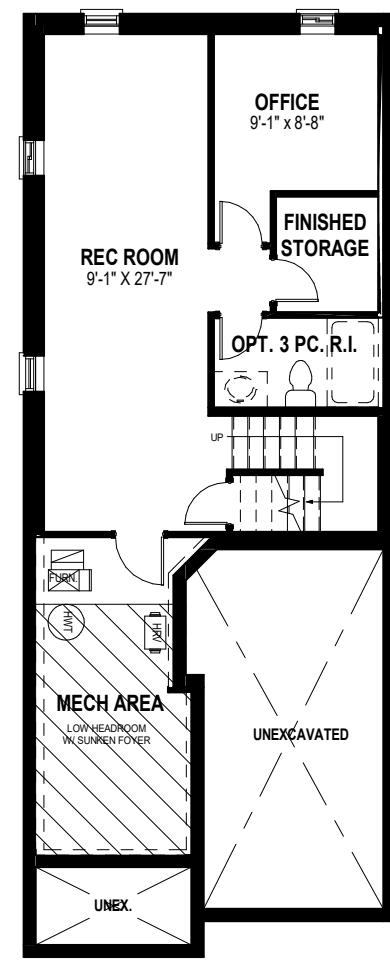
**LOOKOUT**



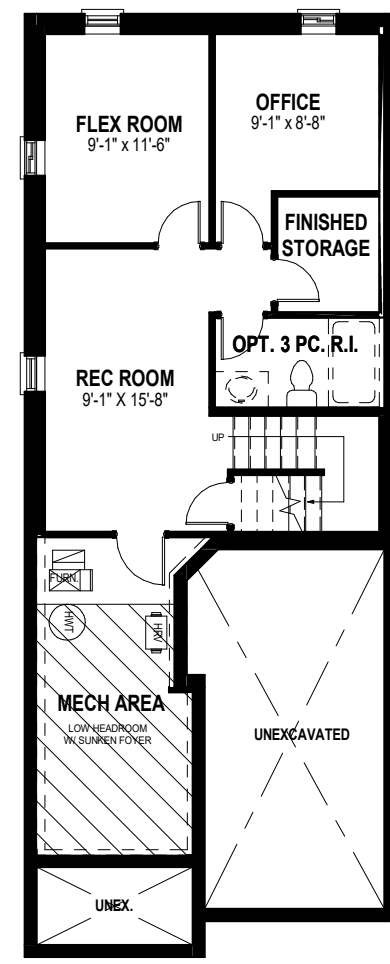
**LOWER LEVEL**



**OPTIONAL FINISHED LOWER LEVEL**  
550 SQ. FT.



**OPTIONAL FINISHED LOWER LEVEL**  
**ALT 1**  
550 SQ. FT.



**OPTIONAL FINISHED LOWER LEVEL**  
**ALT 2**  
550 SQ. FT.

- \* Fridge, stove, dishwasher, and laundry washer/dryer are not included in contract
- \* Bulkheads and chases may be needed as per HVAC design.
- \* Specifications and plans are subject to change without notice E. & O.E..
- \* Actual usable floor space may vary from that stated.
- \* Plans may be reversed depending on location.
- \* Illustrations depicted are an artist's concept of the completed building only.
- \* Illustrations may show optional features, including landscaping and walkway treatments, which may not be included in the base price.
- \* Ask your Freure sales representative for more information.

REVISION DATE: 1/5/23 (ML)

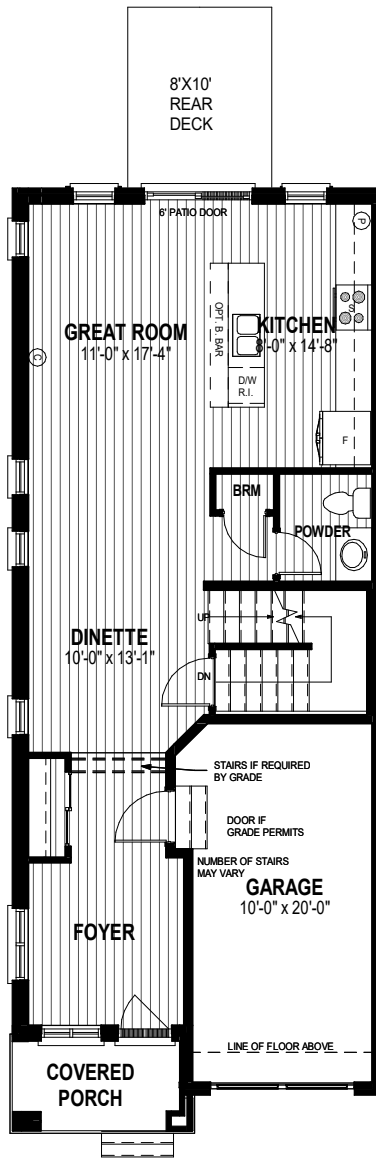
CITY VIEW SERIES - BLACK OAKS

**EASTPORT 1,766 SQ.FT END UNIT**

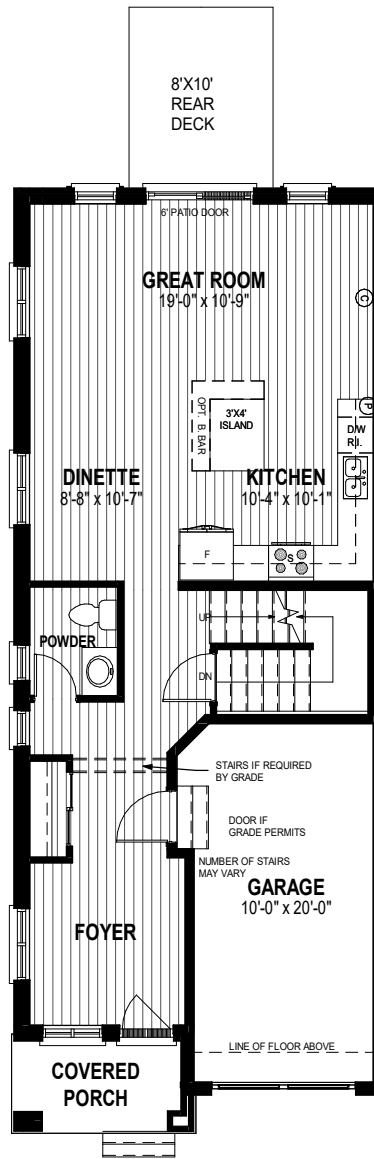
(ADDITIONAL OPT. 550 SQ. FT. BELOW GRADE)



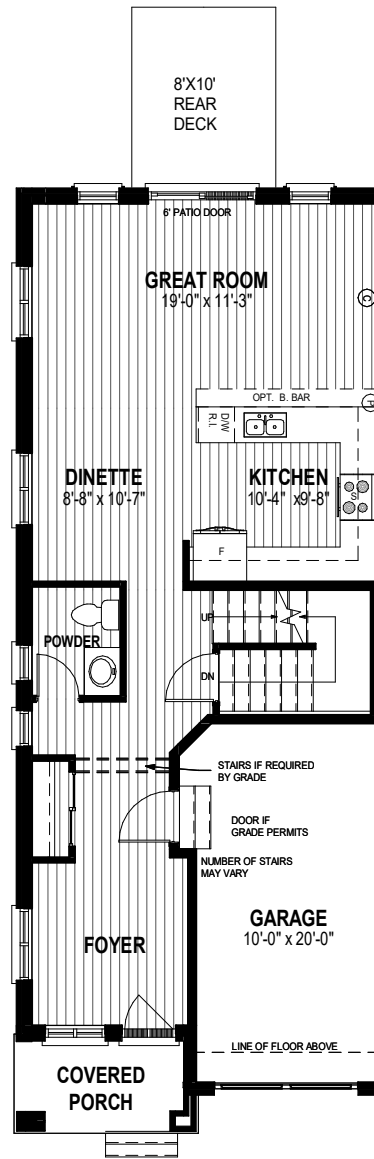
2023-01-05 10:42:12 AM



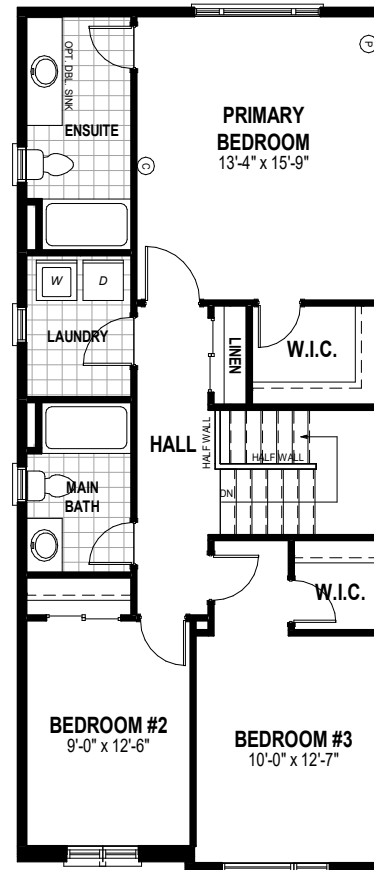
**MAIN FLOOR PLAN**  
776 SQ. FT.



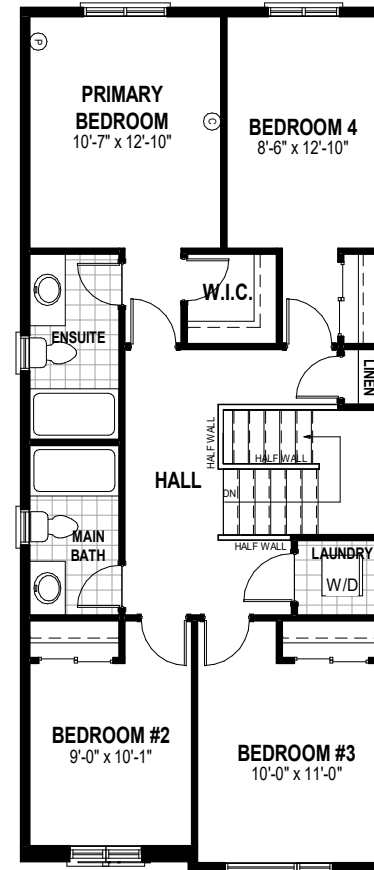
**MAIN FLOOR PLAN ALT 1**  
776 SQ. FT.



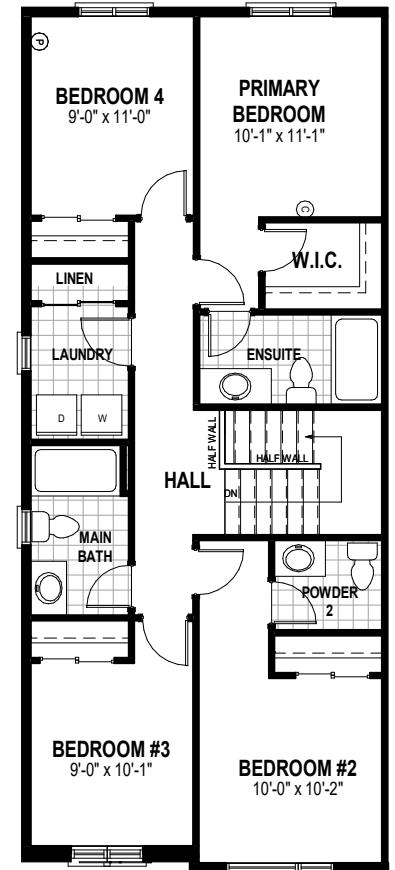
**MAIN FLOOR PLAN ALT 2**  
776 SQ. FT.



**SECOND FLOOR PLAN**  
990 SQ. FT.



**SECOND FLOOR PLAN ALT 1**  
990 SQ. FT.



**SECOND FLOOR PLAN ALT 2**  
990 SQ. FT.

- \* Fridge, stove, dishwasher, and laundry washer/dryer are not included in contract
- \* Bulkheads and chases may be needed as per HVAC design.
- \* Specifications and plans are subject to change without notice E. & O.E..
- \* Actual usable floor space may vary from that stated.
- \* Plans may be reversed depending on location.
- \* Illustrations depicted are an artist's concept of the completed building only.
- \* Illustrations may show optional features, including landscaping and walkway treatments, which may not be included in the base price.
- \* Ask your Freure sales representative for more information.

REVISION DATE: 1/5/23 (ML)

CITY VIEW SERIES - BLACK OAKS

**EASTPORT 1,766 SQ.FT END UNIT**  
(ADDITIONAL OPT. 550 SQ. FT. BELOW GRADE)



2023-01-05 10:42:12 AM