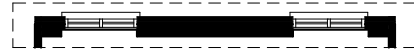
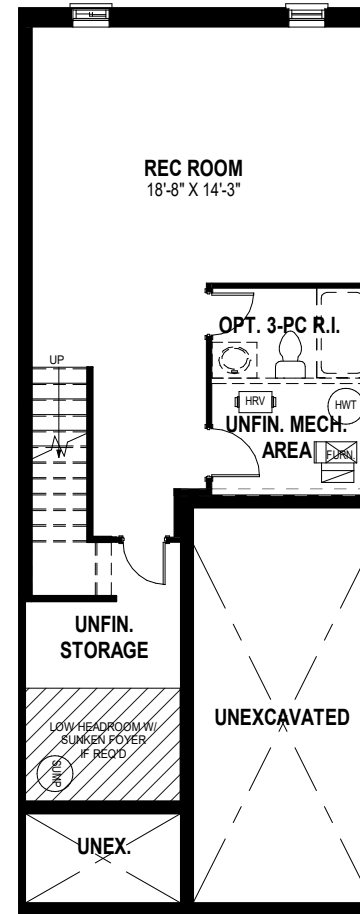
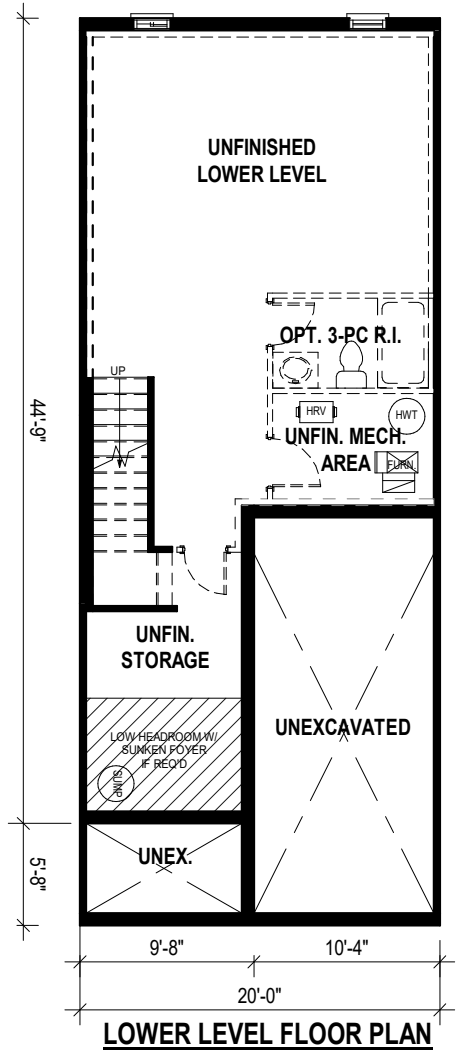




WALKOUT



LOOKOUT



- * Fridge, stove, dishwasher, and laundry washer/dryer are not included in contract
- * Bulkheads and chases may be needed as per HVAC design.
- * Specifications and plans are subject to change without notice E. & O.E..
- * Actual usable floor space may vary from that stated.
- * Plans may be reversed depending on location.
- * Illustrations depicted are an artist's concept of the completed building only.
- * Illustrations may show optional features, including landscaping and walkway treatments, which may not be included in the base price.
- * Ask your Freure sales representative for more information.
- * Garage door location may change depending on grading conditions.
- * Lookout and Walkout window/door locations may change as per Main Floor Plan Options

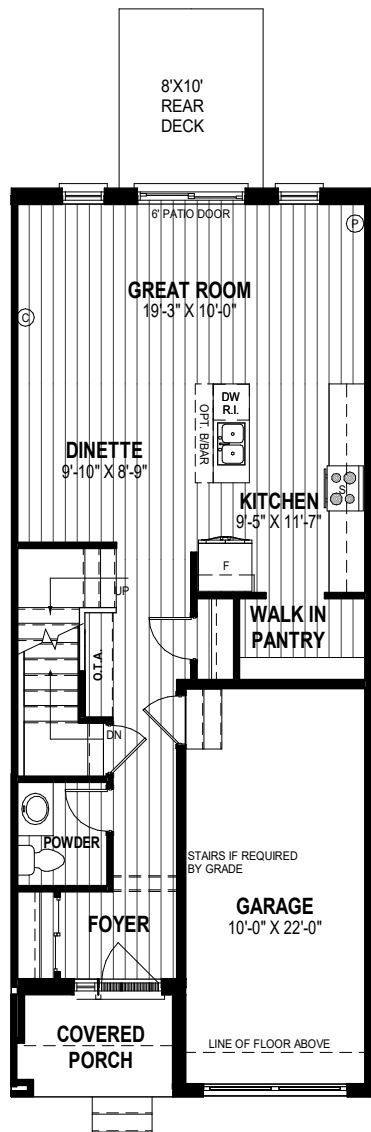
REVISION DATE: 1/5/23 (ML)

20' ~ CITYVIEW SERIES - BLACK OAKS

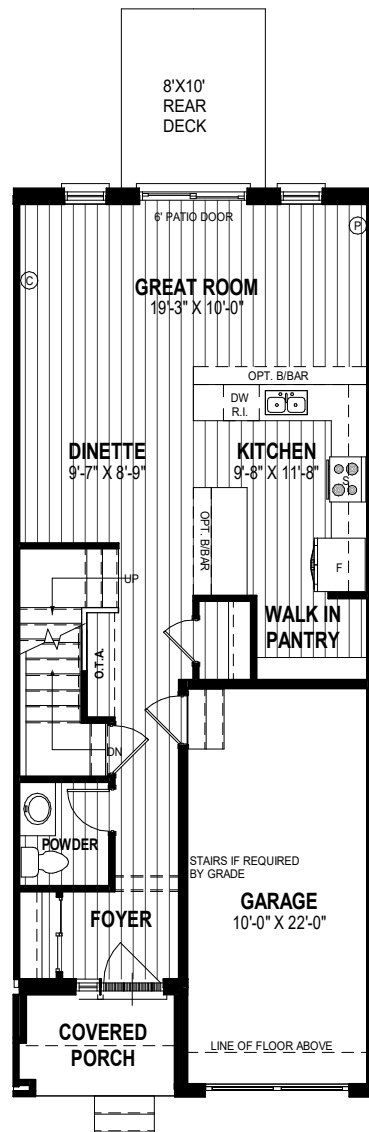
OXFORD - 1,672 SQ.FT (INT. UNIT)

(ADDITIONAL OPT. 477 BELOW GRADE)

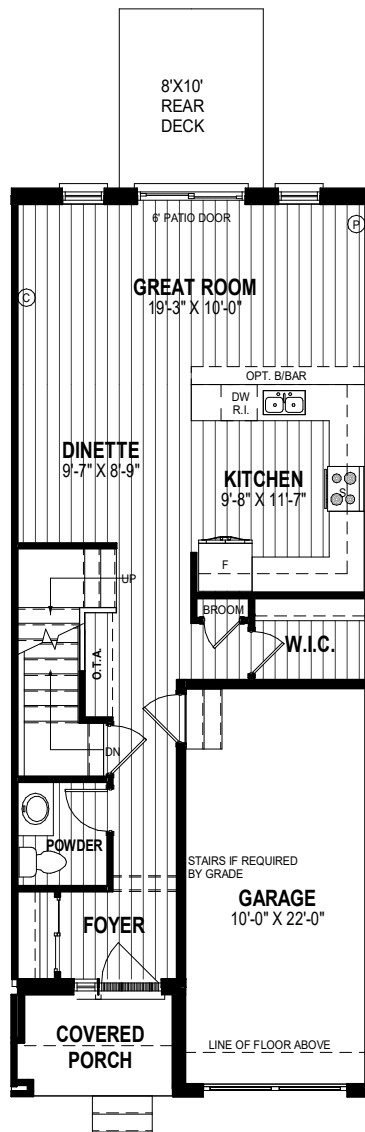




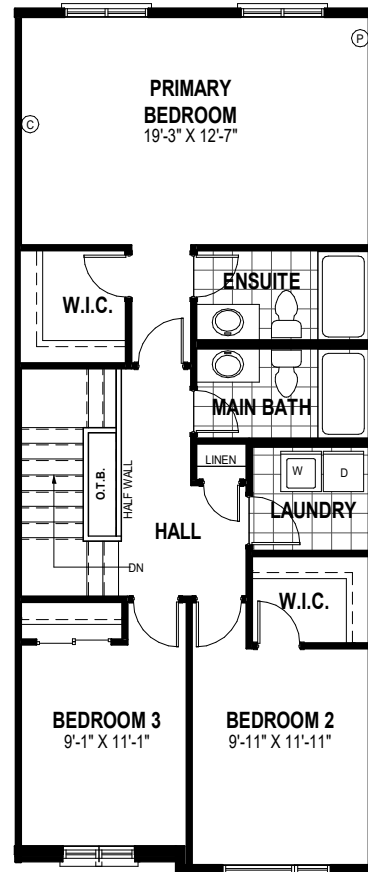
MAIN FLOOR PLAN
720 SQ.FT



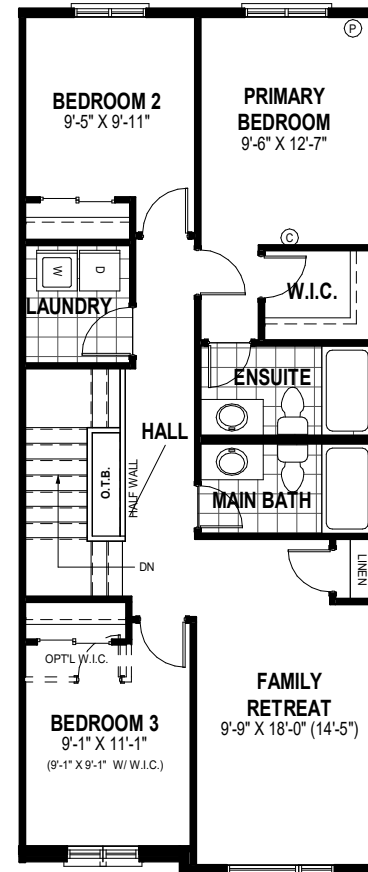
MAIN FLOOR PLAN ALT. 1
720 SQ.FT



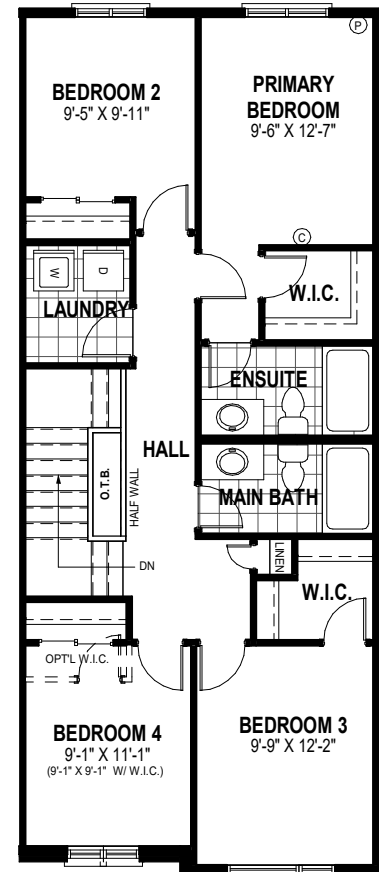
MAIN FLOOR PLAN ALT. 2
720 SQ.FT



SECOND FLOOR PLAN
952 SQ.FT



SECOND FLOOR PLAN ALT 1
952 SQ.FT



SECOND FLOOR PLAN ALT 2
952 SQ.FT

- * Fridge, stove, dishwasher, and laundry washer/dryer are not included in contract
- * Bulkheads and chases may be needed as per HVAC design.
- * Specifications and plans are subject to change without notice E. & O.E..
- * Actual usable floor space may vary from that stated.
- * Plans may be reversed depending on location.
- * Illustrations depicted are an artist's concept of the completed building only.
- * Illustrations may show optional features, including landscaping and walkway treatments, which may not be included in the base price.
- * Ask your Freure sales representative for more information.
- * Garage door location may change depending on grading conditions.
- * Lookout and Walkout window/door locations may change as per Main Floor Plan Options

REVISION DATE: 1/5/23 (ML)

20' ~ CITYVIEW SERIES - BLACK OAKS

OXFORD - 1,672 SQ.FT (INT. UNIT)

(ADDITIONAL OPT. 477 BELOW GRADE)

