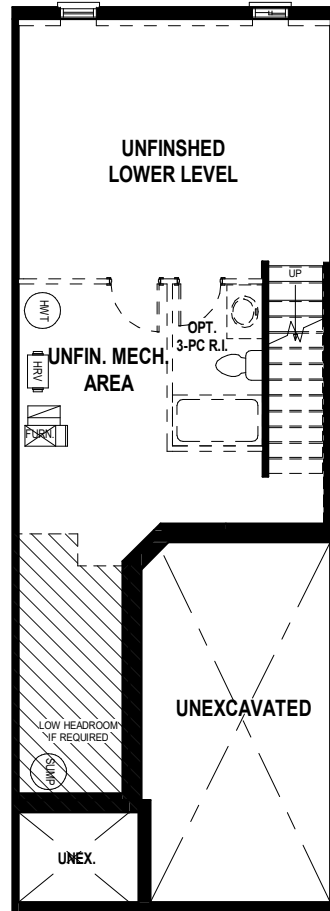


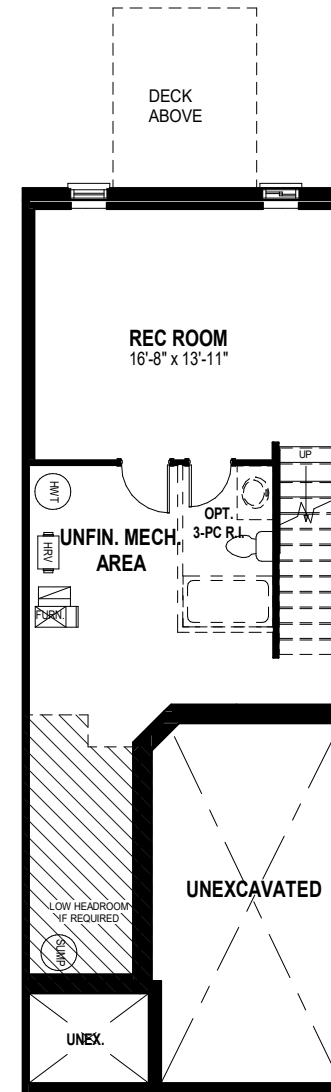
WALKOUT



LOOKOUT



**STANDARD UNFINISHED
LOWER LEVEL PLAN**



**OPTIONAL FINISHED
LOWER LEVEL PLAN**
320 SQ. FT.

- * Fridge, stove, dishwasher, and laundry washer/dryer are not included in contract
- * Bulkheads and chases may be needed as per HVAC design.
- * Specifications and plans are subject to change without notice E. & O.E..
- * Actual usable floor space may vary from that stated.
- * Plans may be reversed depending on location.
- * Illustrations depicted are an artist's concept of the completed building only.
- * Illustrations may show optional features, including landscaping and walkway treatments, which may not be included in the base price.
- * Ask your Freure sales representative for more information.

REVISION DATE: 6/19/23 (ML)

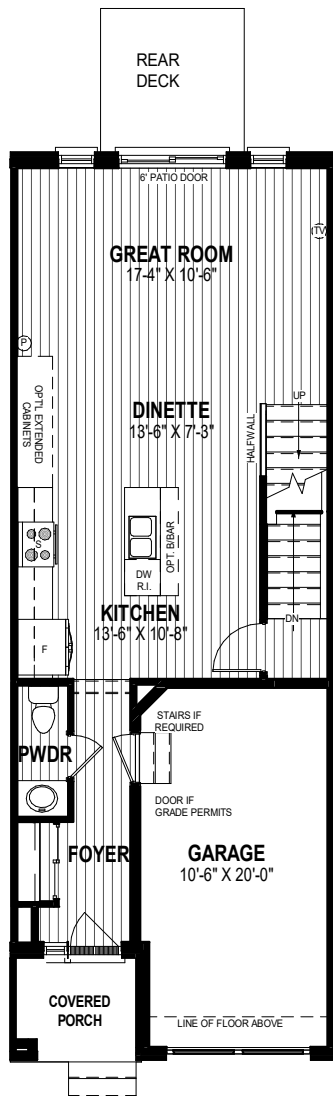
18' ~ MIDTOWN SERIES - BLACK OAKS

DOVER - 3 or 4 BED 1,481 SQ.FT (INT. UNIT)

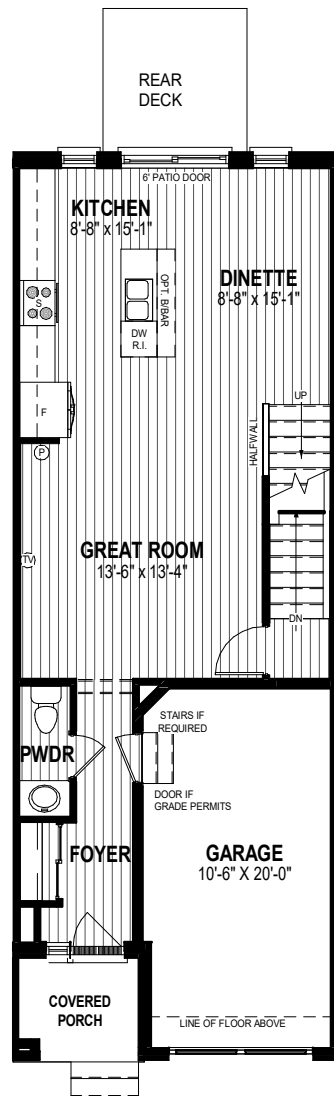
(ADDITIONAL OPT. 320 SQ. FT. BELOW GRADE)



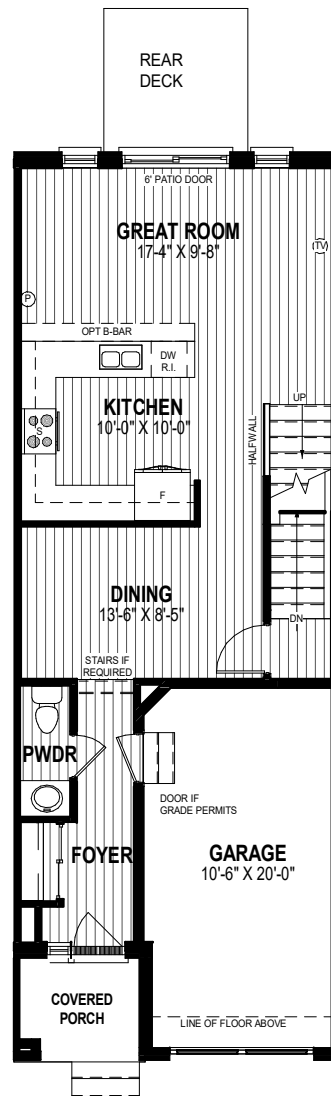
2026-06-19 9:37:17 AM



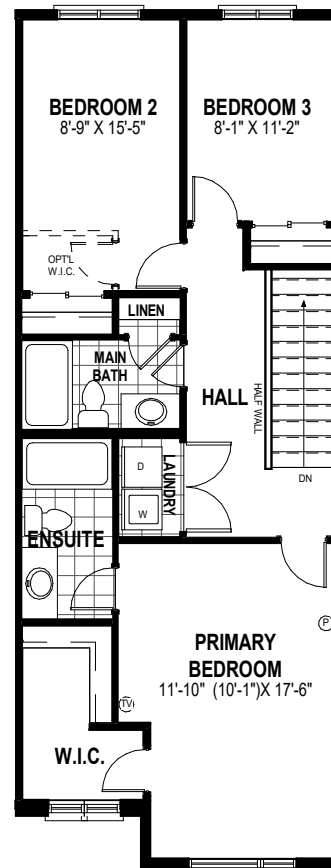
MAIN FLOOR PLAN
644 SQ.FT



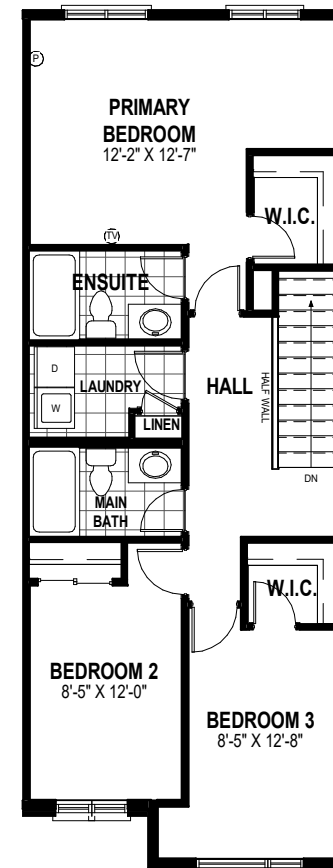
MAIN FLOOR PLAN ALT. 1
644 SQ.FT



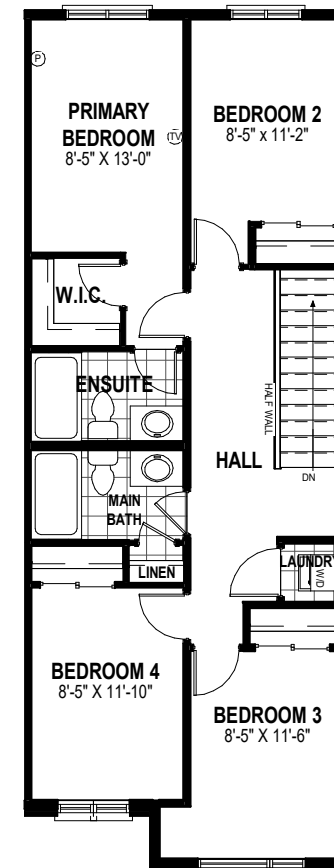
MAIN FLOOR PLAN ALT. 2
644 SQ.FT



SECOND FLOOR PLAN
837 SQ.FT



SECOND FLOOR PLAN ALT. 1
837 SQ.FT



SECOND FLOOR PLAN ALT. 2
837 SQ.FT

- * Fridge, stove, dishwasher, and laundry washer/dryer are not included in contract
- * Bulkheads and chases may be needed as per HVAC design.
- * Specifications and plans are subject to change without notice E. & O.E..
- * Actual usable floor space may vary from that stated.
- * Plans may be reversed depending on location.
- * Illustrations depicted are an artist's concept of the completed building only.
- * Illustrations may show optional features, including landscaping and walkway treatments, which may not be included in the base price.
- * Ask your Freure sales representative for more information.

REVISION DATE:6/19/26 (ML)

18' ~ MIDTOWN SERIES - BLACK OAKS

DOVER - 3 or 4 BED 1,481 SQ.FT (INT. UNIT)

(ADDITIONAL OPT. 320 SQ. FT. BELOW GRADE)



2026-06-19 9:37:18 AM