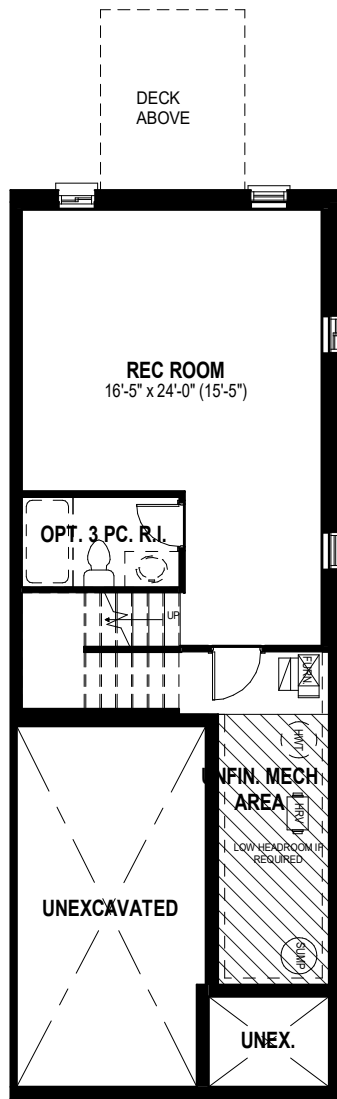
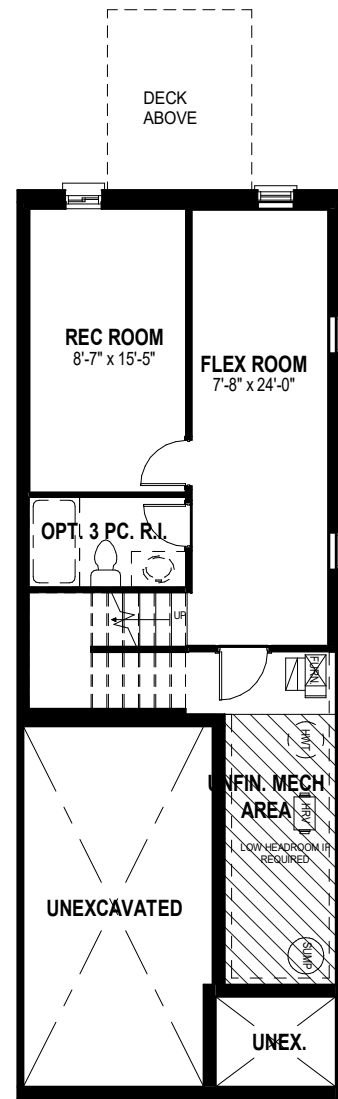


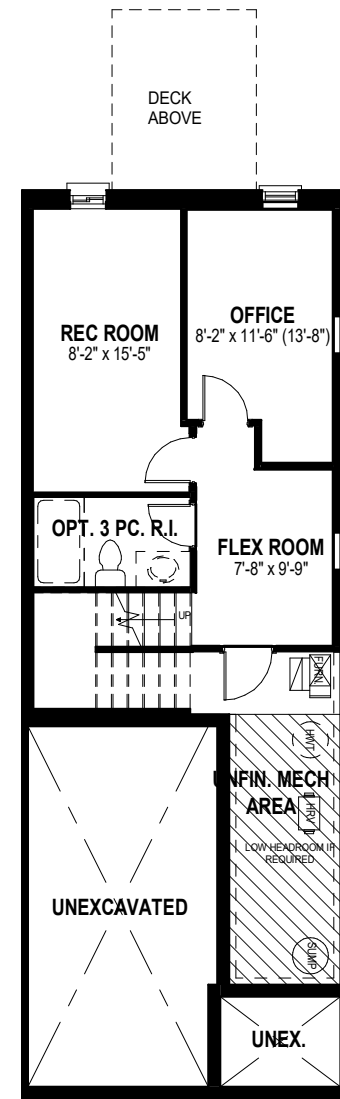
**STANDARD
LOWER LEVEL FLOOR PLAN**



**OPTIONAL FINISHED
LOWER LEVEL FLOOR PLAN**
462 SQ. FT.



**OPTIONAL FINISHED
LOWER LEVEL PLAN ALT 1**
462 SQ. FT.



**OPTIONAL FINISHED
LOWER LEVEL PLAN ALT 2**
462 SQ. FT.

* Fridge, stove, dishwasher, and laundry washer/dryer are not included in contract
 * Bulkheads and chases may be needed as per HVAC design.
 * Specifications and plans are subject to change without notice E. & O.E..
 * Actual usable floor space may vary from that stated.
 * Plans may be reversed depending on location.
 * Illustrations depicted are an artist's concept of the completed building only.
 * Illustrations may show optional features, including landscaping and walkway treatments, which may not be included in the base price.
 * Ask your Freure sales representative for more information.

REVISION DATE: 1/5/23 (ML)

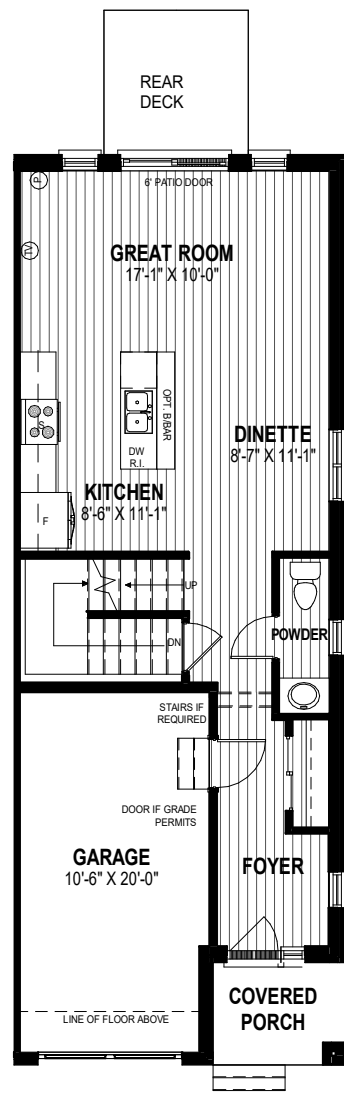
18' ~ MIDTOWN SERIES - BLACK OAKS

RIPLEY 3 or 4 BED- 1,510 SQ.FT (END UNIT)

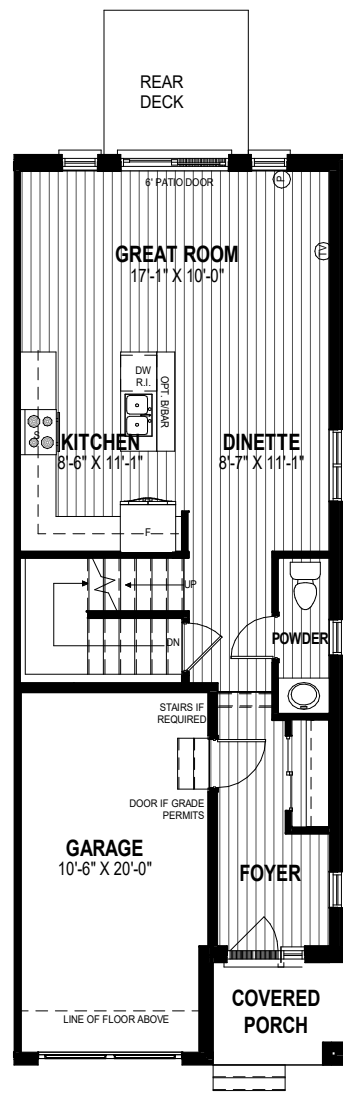
(ADDITIONAL OPT. 462 SQ. FT. BELOW GRADE)



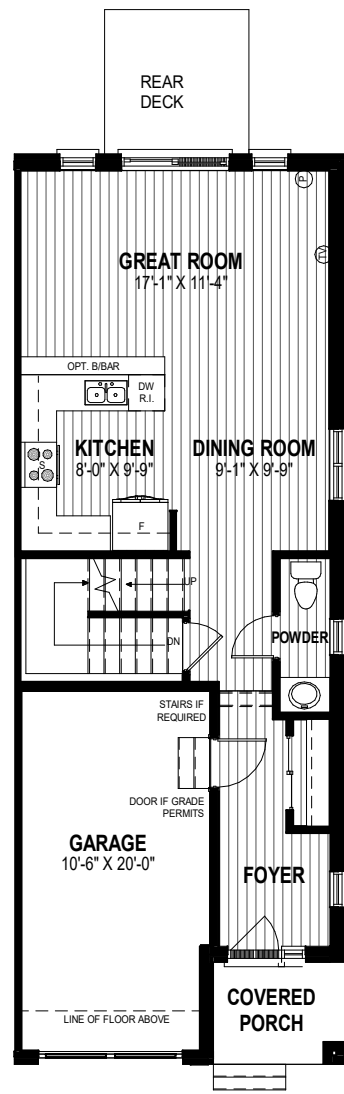
2026-06-19 10:16:50 AM



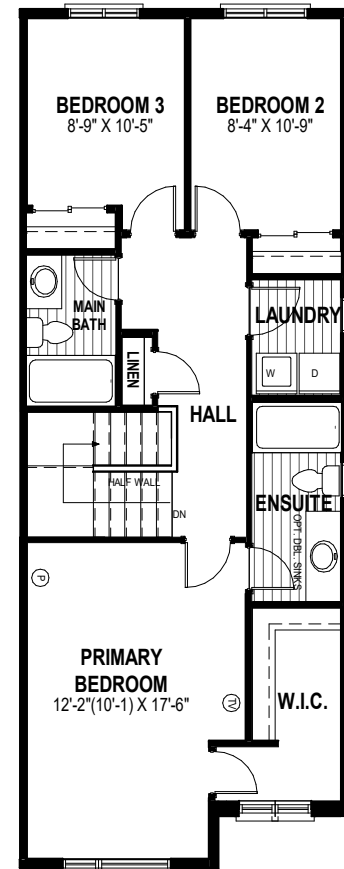
MAIN FLOOR PLAN
658 SQ.FT



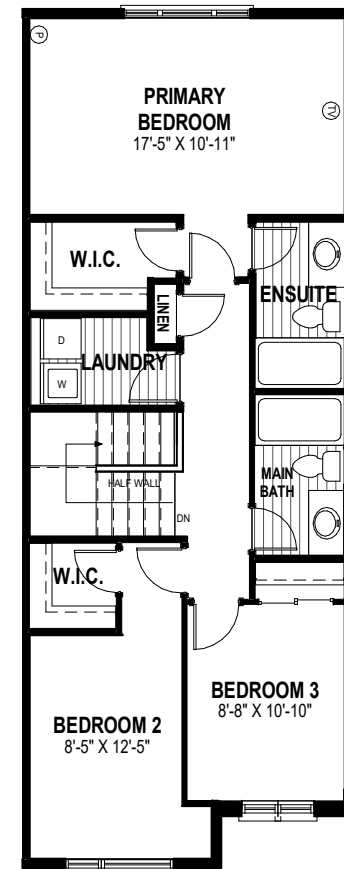
MAIN FLOOR PLAN ALT. 1
658 SQ.FT



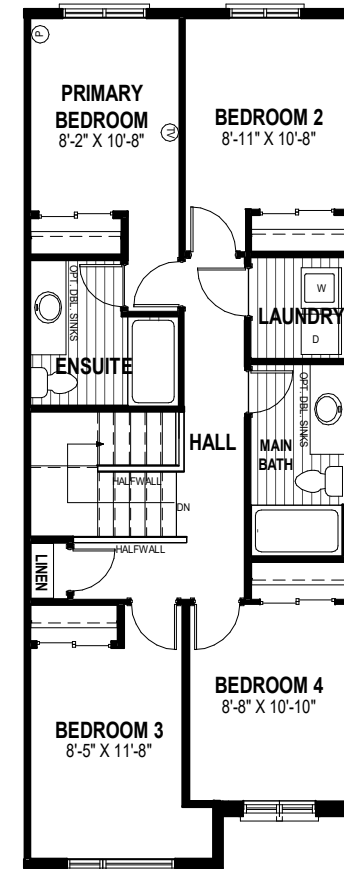
MAIN FLOOR PLAN ALT. 2
658 SQ.FT



SECOND FLOOR PLAN
852 SQ.FT



SECOND FLOOR PLAN ALT. 1
852 SQ.FT



SECOND FLOOR PLAN ALT. 2
852 SQ.FT

- * Fridge, stove, dishwasher, and laundry washer/dryer are not included in contract
- * Bulkheads and chases may be needed as per HVAC design.
- * Specifications and plans are subject to change without notice E. & O.E..
- * Actual usable floor space may vary from that stated.
- * Plans may be reversed depending on location.
- * Illustrations depicted are an artist's concept of the completed building only.
- * Illustrations may show optional features, including landscaping and walkway treatments, which may not be included in the base price.
- * Ask your Freure sales representative for more information.

REVISION DATE: 6/19/26 (ML)

18' ~ MIDTOWN SERIES - BLACK OAKS

RIPLEY 3 or 4 BED- 1,510 SQ.FT (END UNIT)

(ADDITIONAL OPT. 462 SQ. FT. BELOW GRADE)



2026-06-19 10:16:51 AM